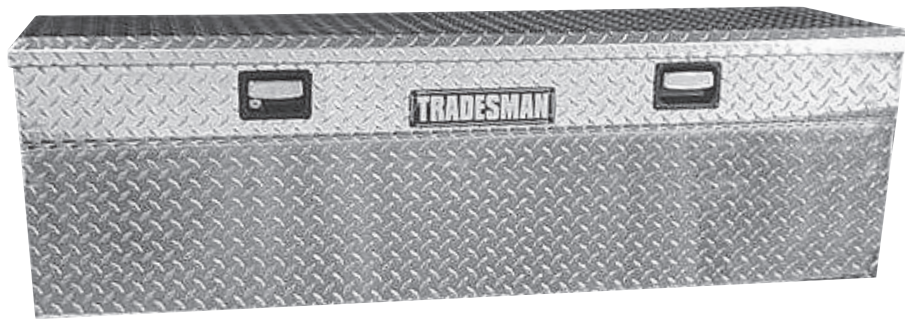
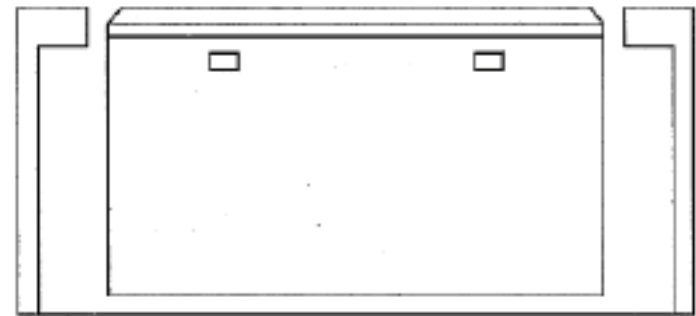


TRADESMAN®

TAWB60SL/BK



- 1) Locate box in desired position.
- 2) Drill holes in bottom of box and truck bed. (Caution; be sure not to drill into wiring and/or fuel or brake lines.)
- 3) Bolt box to truck bed. (Note: using a small amount of sealer on the bolts will keep out dust and water.)



Rear view of truck bed